

OTDR Report (1310 nm (9 μm))

General Information

File name:	20_1310.trc	Customer:	ADNOC
Test date:	14-Feb-24	Company:	PAN ARABIA
Test time:	3:18 PM	Fiber ID:	20
Cable ID:	FAR0 to FAR3 1A (A-B)		
Job ID:	0500831		
Comments:	END TO END TEST		

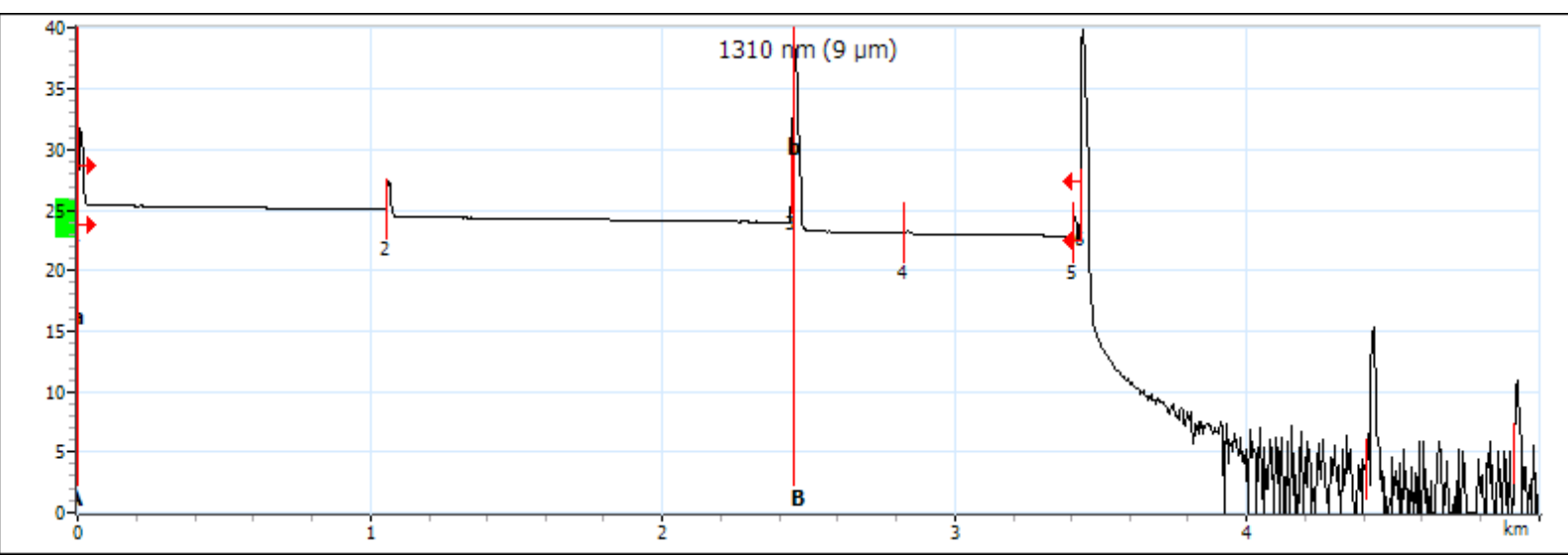
Locations

	Location A	Location B
Location	FAR0	FAR3
Operator	PANDA	HABEEB
Model	MAX-720C-Q1-EA-EI	
Serial number	1206159	
Calibration date	29-Mar-23 (UTC)	

Results

Span length:	3.4335 km	Average loss:	0.889 dB/km	Injection level:	25.4 dB
Span loss:	3.051 dB	Average splice loss:	---		
Span ORL:	29.67 dB	Maximum splice loss:	---		

Graph



Markers

Marker	Position (km)	Value (dB)	A-B LSA attenuation:	0.756 dB/km	A-B average loss:	-5.720 dB/km
a	0.0000	25.453	A-B LSA loss:	1.853 dB	4-point Event Loss:	-14.875 dB
A	0.0000	25.453	A-B ORL:	35.05 dB	Maximum reflectance:	-31.4 dB
B	2.4505	39.471				
b	2.4505	39.471				

OTDR Report (1310 nm (9 μm))

Event Table

Type	No.	Pos./Length (km)	Loss (dB)	Reflectance (dB)	Attenuation (dB/km)	Cumulative (dB)
First Connector	1	0.0000	---	-46.4		0.000
Section		1.0558	0.377		0.357	0.377
Reflective	2	1.0558	0.576	-55.8		0.953
Section		1.3896	0.471		0.339	1.424
Reflective	3	2.4454	0.679	-27.8		2.103
Section		0.3843	0.221		0.576	2.324
Reflective	4	2.8296	0.026	-70.0		2.350
Section		0.5751	0.202		0.351	2.552
Reflective	5	3.4048	0.233	-58.9		2.785
Section		0.0287	0.267		9.289	3.051
Reflective	6	3.4335	---	-24.6		3.051
Section		0.9773	---		---	---
Echo		4.4107	---	-38.1		---
Section		0.5055	---		---	---
Echo		4.9163	---	-47.1		---

Macroband

Position (km)	Delta Loss (dB)

Pass/Fail Thresholds

	1310 nm (9 μm)

Test Parameters

	A → B
Wavelength (nm)	1310 nm (9 μm)
Range (km)	5.0000
Pulse (ns)	100
Duration (s)	5

Test Settings

	A → B	Macroband Wavelengths	Macroband Delta Loss (dB)
IOR	1.467700		
Backscatter (dB)	-79.45		
Helix factor (%)	0.00		
Splice loss detection threshold (dB)	0.020		
Reflectance detection threshold (dB)	-72.0		
End-of-fiber detection threshold (dB)	5.000		

OTDR Report (1550 nm (9 μm))

General Information

File name:	20_1550.trc	Customer:	ADNOC
Test date:	14-Feb-24	Company:	PAN ARABIA
Test time:	3:18 PM	Fiber ID:	20
Cable ID:	FAR0 to FAR3 1A (A-B)		
Job ID:	0500831		
Comments:	END TO END TEST		

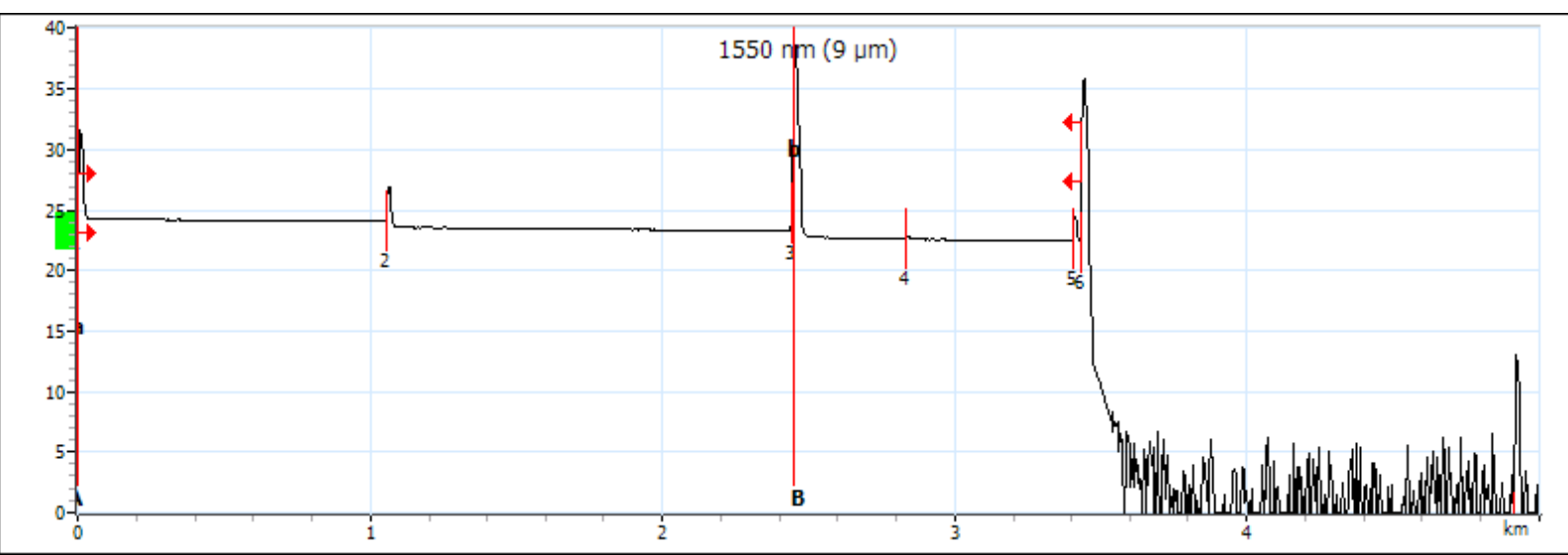
Locations

	Location A	Location B
Location	FAR0	FAR3
Operator	PANDA	HABEEB
Model	MAX-720C-Q1-EA-EI	
Serial number	1206159	
Calibration date	29-Mar-23 (UTC)	

Results

Span length:	3.4333 km	Average loss:	0.645 dB/km	Injection level:	24.3 dB
Span loss:	2.213 dB	Average splice loss:	0.022 dB		
Span ORL:	30.51 dB	Maximum splice loss:	0.022 dB		

Graph



Markers

Marker	Position (km)	Value (dB)	A-B LSA attenuation:	0.576 dB/km	A-B average loss:	-5.952 dB/km
a	0.0000	24.671	A-B LSA loss:	1.411 dB	4-point Event Loss:	-15.075 dB
A	0.0000	24.671	A-B ORL:	36.39 dB	Maximum reflectance:	-32.0 dB
B	2.4505	39.256				
b	2.4505	39.256				

OTDR Report (1550 nm (9 μm))

Event Table

Type	No.	Pos./Length (km)	Loss (dB)	Reflectance (dB)	Attenuation (dB/km)	Cumulative (dB)
First Connector	1	0.0000	---	-46.7		0.000
Section		1.0560	0.213		0.201	0.213
Reflective	2	1.0560	0.478	-56.7		0.690
Section		1.3897	0.295		0.212	0.985
Reflective	3	2.4456	0.472	-29.3		1.457
Section		0.3854	0.212		0.550	1.669
Non-Reflective	4	2.8310	0.022			1.691
Section		0.5730	0.141		0.246	1.832
Reflective	5	3.4039	0.156	-59.8		1.988
Section		0.0293	0.225		7.653	2.213
Reflective	6	3.4333	---	-34.4		2.213
Section		1.4822	---		---	---
Echo		4.9155	---	-45.3		---

Macrobend

Position (km)	Delta Loss (dB)

Pass/Fail Thresholds

	1550 nm (9 μm)

Test Parameters

	A → B
Wavelength (nm)	1550 nm (9 μm)
Range (km)	5.0000
Pulse (ns)	100
Duration (s)	5

Test Settings

	A → B	Macrobend Wavelengths	Macrobend Delta Loss (dB)
IOR	1.468325		
Backscatter (dB)	-81.87		
Helix factor (%)	0.00		
Splice loss detection threshold (dB)	0.020		
Reflectance detection threshold (dB)	-72.0		
End-of-fiber detection threshold (dB)	5.000		